

SASKATCHEWAN LAND SURVEYORS' ASSOCIATION
PROFESSIONAL EXAMINATION
STANDARDS OF PRACTICE AND PRINCIPLES OF EVIDENCE

1)

Controller of Surveys Policies:

- a) Policy GO-04/007 – “Descriptive Plan Type 2 Utility Easements”. Prescribed descriptive plan type two under LS Regs 52 (f) allows for what ? Under this policy the requirements have been relaxed. List what is allowed under this policy that is not included under the prescribed regulations.
- b) Policy GO-06/001 – “Guidelines for Change Orders”. This policy clarifies the requirements necessary to correct and amend plans. What can you not do by a change order ?
- c) Policy GO-07/002 – “Witness Monument”. Under this policy there are 5 scenarios. Describe each scenario with use of a supporting diagram.
- d) Policy GO-09/001 – “Quarter Monuments on Blind Lines”. In the situation where the quarter monument on a blind line is not a found original and is found not to be at its theoretic position, but within an acceptable tolerance and there are no subsequent surveys ever tied into it and no improvements to this monument. What does the policy advise and under what circumstances would you do other than the policy advises and why ?
- e) Policy GO-12/001 – “Water Boundaries: Discrepancies between water boundaries shown on new plans and GIS water boundaries”. What are the two tolerance values and for what plans are these tolerances for ? Explain the rational on how theses tolerances on plans were established.

Marks.

15

2)

9

When performing re-establishments based on township plats only, what should you watch for concerning the township plat specific, with respect to chainages, bearings and whether the re-establishment is on a township exterior versus on the interior of the township ?

3)

10

During the course of a survey you tie into another surveyor's work. Your measurement differs with the other surveyor's measurement by 3 meters along the boundary of the quarter section. What would you do ?

- 10 4) Attached is township plan 5-18-2. The land owner has asked you to post the east boundary of section 21. You have located the NE9, EQ16, NE21 and EQ28, and the EQ21 and NE16 are both lost. The only plan you require is this township plan. What information provided on this township plan should you give and not give consideration to for the required re-establishments and why ? How would you confirm this ?
- 9 5) List three riparian rights that landowners have whose land is adjacent a navigable body of water.
- 9 6) When redefining existing boundaries, provide the order in which evidence is accepted and provide the reason for this.
- 3 7) List at least three instances where you would find monuments on both sides of a road allowance.
- 15 8) a) What are the main differences between the First, Second and Third Systems of Survey in Western Canada and give the general location of each of these systems Saskatchewan ?
b) What is the main difference between the Third and Third Modified Systems of Survey ?
c) Why was the Modified Third System of Survey devised and where in the Province it is found ?
d) Describe the River Lot Survey System and where in the Province it is found.
e) Define as the instances where you would find Fractional Quarter Sections and why they exist instance.

10 9)

Describe all the various situations when you are not required to use the nearest primary monuments on either side of your survey and in these situations what are your valid options.

10 10)

Attached is township plan 53-20-3. The land owner has asked you to establish the division line between sections 29 and 32. As the water has receded enough a monument is also required to be established at the NQ29. Provide the steps for completing this work. State the legislation and any other documentation required to complete this request.

SASKATCHEWAN

Plan of Township 5, Range 18, West of the Second Meridian.

THIRD EDITION

SCALE 40 CHAINS TO AN INCH

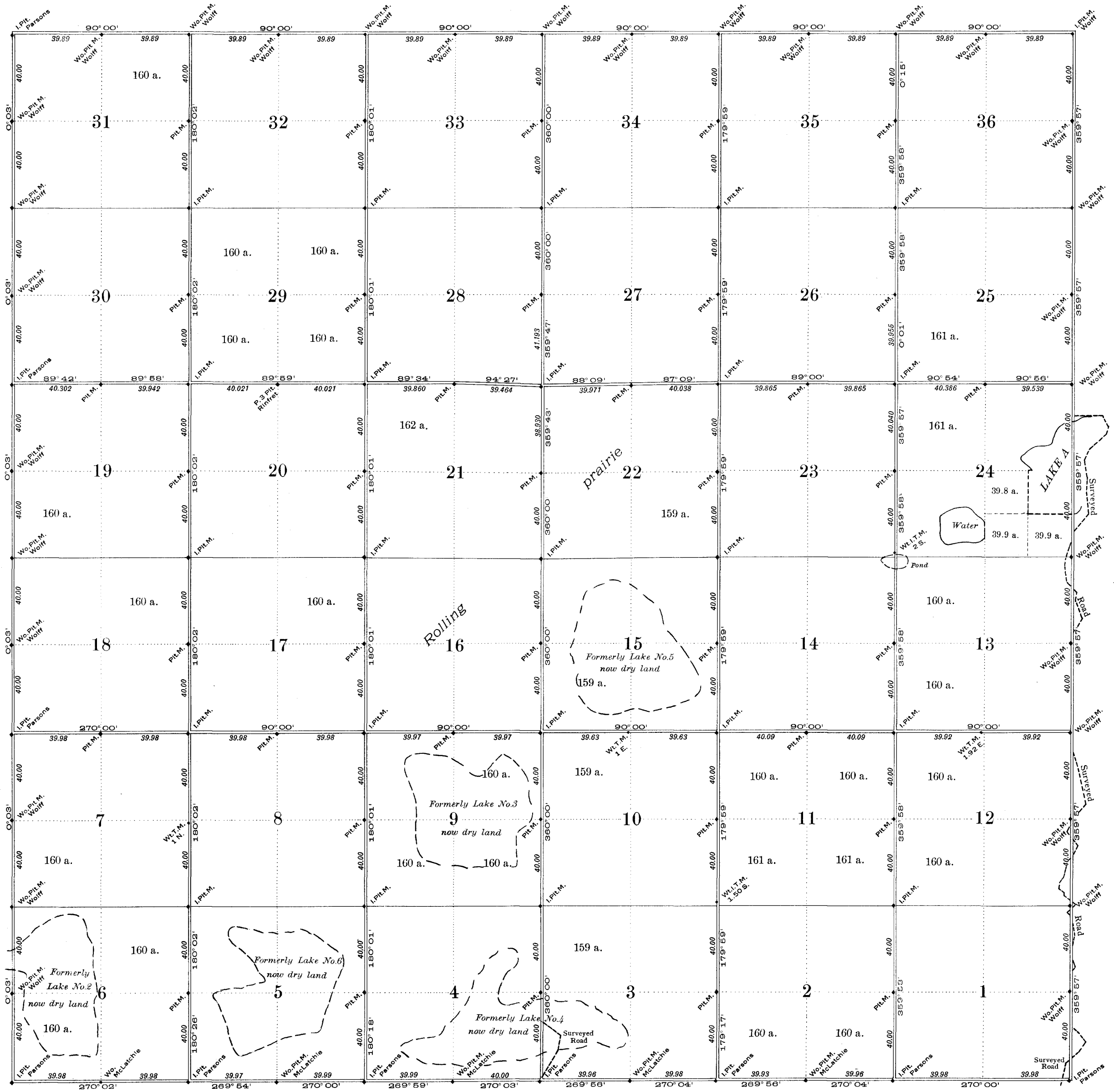


PHOTO-ZINCOGRAPHED AT THE SURVEYOR GENERAL'S OFFICE, OTTAWA, CANADA

Compiled from official surveys by

J. McLatchie	D.L.S.	15th September	1881
C. E. Wolff	D.L.S.	13th October	1881
E. Fafard	D.L.S.	20th August	1882
J. L. R. Parsons	D.L.S.	24th August	1905
A. G. Stuart	D.L.S.	4th July	1914
C. Rinfret	D.L.S.	7th October	1920

NOTE: The subdivisions of quarter-sections shown upon this plan are legal subdivisions. Distances are in chains. Bearings are reckoned from the astronomical meridian through the centre of the township. Areas in acres are marked on all lands surveyed, except lands that have been patented. The name at a monument is that of the surveyor who erected or restored the monument. All monuments not so designated were erected by E. Fafard.

P. stands for standard post; I. for old pattern iron post; Wo. for wooden post; Pit. for four pits; M. for mound; Wt. for witness; T. for trench.

Department of the Interior, Ottawa, 21st July, 1922

Approved and Confirmed

J. Shanko
For the Surveyor General

13	14	15	16
12	11	10	9
5	6	7	8
4	3	2	1

Legal Subdivisions
in a Section

SASKATCHEWAN

75.

Plan of Township 53, Range 20, West of the Third Meridian

SECOND EDITION, CORRECTED

SCALE 40 CHAINS TO AN INCH

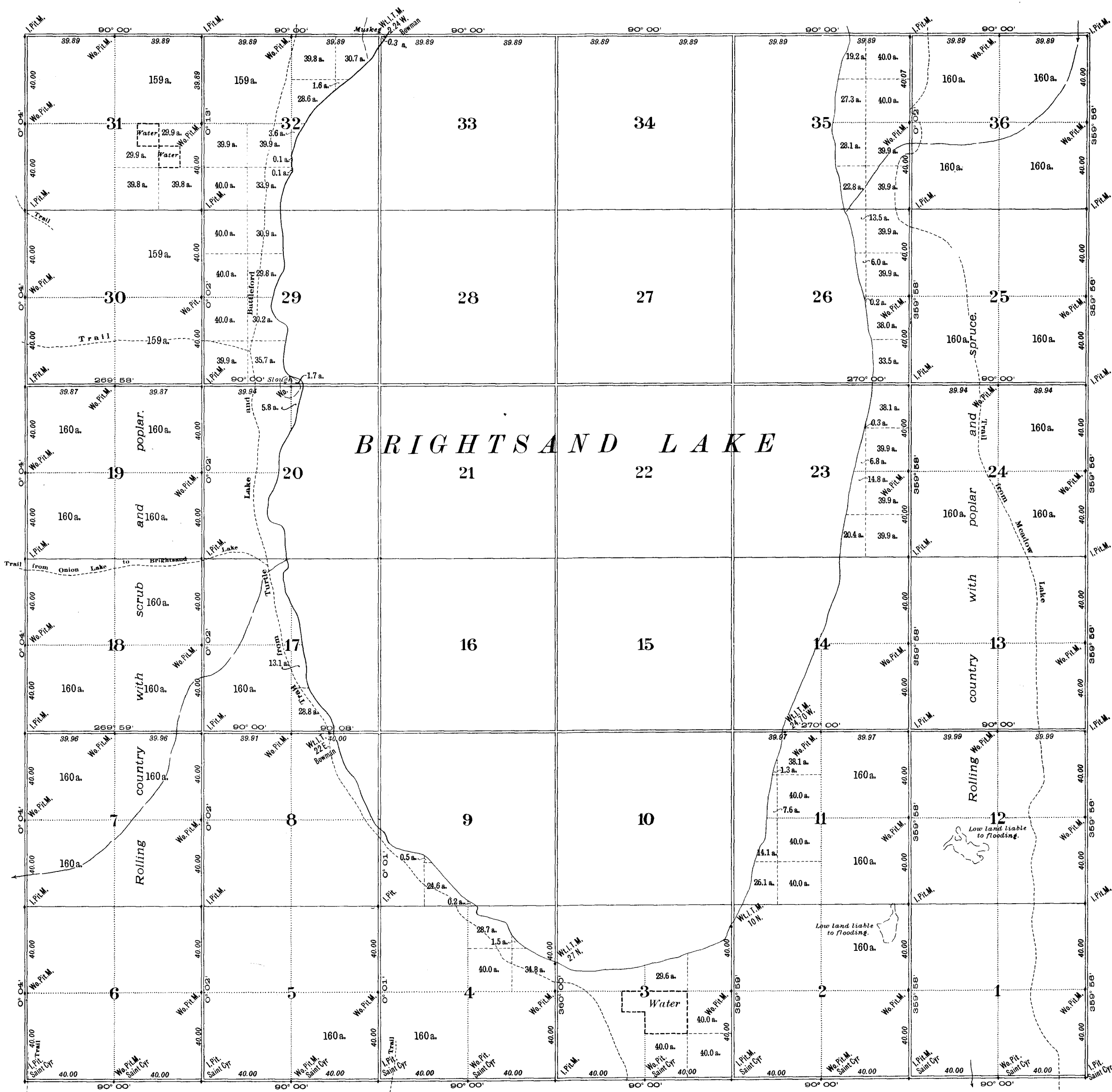


PHOTO-ZINCGRAPHED AT THE SURVEYOR GENERAL'S OFFICE, OTTAWA, CANADA

Compiled from official surveys by

A. Saint Cyr,D.L.S.....30th May,.....1903
 T. S. Gore,D.L.S.....14th September,.....1904
 E. P. Bowman,D.L.S.....11th October,.....1915

Department of the Interior, Ottawa, 8th August, 1916.

Approved and Confirmed.

E. Deville
 Surveyor General.

NOTE: The subdivisions of quarter sections shown upon this plan are legal subdivisions and quarters of legal subdivisions. Distances are in chains. Bearings are reckoned from the astronomical meridian through the centre of the township. Areas in acres are marked on all lands surveyed except lands that have been patented and lands of which more than one-half is reported to be permanently under water. The name of a monument is that of the surveyor who erected or restored the monument. All monuments not so designated were erected by T. S. Gore, D.L.S.

13	14	15	16
12	11	10	9
5	6	7	8
4	3	2	1

Legal Subdivisions
 in a Section.