

**SASKATCHEWAN LAND SURVEYORS' ASSOCIATION
PROFESSIONAL EXAMINATION
STANDARDS OF PRACTICE AND PRINCIPLES OF EVIDENCE**

1)

Controller of Surveys Policies:

- a) Policy GO-05/005 – “Monumentation Requirements for Establishing Legal Subdivisions”. The N $\frac{1}{4}$ 3, center of section 3 and none of legal subdivisions have been previously monumented. The 7 primary monuments defining section 3 are all found original monuments with a deflection existing at the E $\frac{1}{4}$ 3. Provide a sketch showing the lines and the minimum monumentation for a new Parcel A that is common with the east boundary LS2 and the north boundary of the road allowance. Does it matter if there are deflections also at the E $\frac{1}{4}$ 4 and N $\frac{1}{4}$ 34 ?
- b) Policy GO-05/008 – “Intersecting Quarter Section Lines”. Explain this policy and why it came to be.
- c) Policy GO-09/001 – “Quarter Monuments on Blind Lines”. In the situation where the quarter monument on a blind line is not a found original and is found not to be at its theoretic position, but within an acceptable tolerance and there are no subsequent surveys ever tied into it and no improvements to this monument. What does the policy advise and under what circumstances would you do other than the policy advises and why?
- d) Policy GO-12/001 – “Water Boundaries: Discrepancies between water boundaries shown on new plans and GIS water boundaries”. What are the two tolerance values and for what plans are these tolerances for? Explain the rational on how theses tolerances on plans were established.
- e) Which policy states the Controller of Surveys should be contacted prior to submitting a plan under this policy and why?

Marks.

20

2)

10

To what ministry and what documentation is required to be submitted for a street name change? State the legislation that provides for this.

3)

10

What are the duties of a surveyor when a required primary monument is lost and there are survey re-establishment problems?

10 4)

Attached is township plan 5-18-2. The land owner has asked you to post the east boundary of section 21. You have located the NE9, EQ16, NE21 and EQ28, and the EQ21 and NE16 are both lost. The only plan you require is this township plan. What information provided on this township plan should you give and not give consideration to for the required re-establishments and why? How would you confirm this?

10 5)

List three riparian rights that landowners have whose land is adjacent a navigable body of water.

10 6)

When redefining existing boundaries, provide the order in which evidence is accepted and provide the reason for this.

10 7)

Attached is township plan 53-20-3. The land owner has asked you to establish the division line between sections 29 and 32. As the water has receded enough a monument is also required to be established at the NQ29. Provide the steps for completing this work. State the legislation and any other documentation required to complete this request.

10 8)

In the 2010 appeal case of "Resort Village of Island View v. Romashenko":

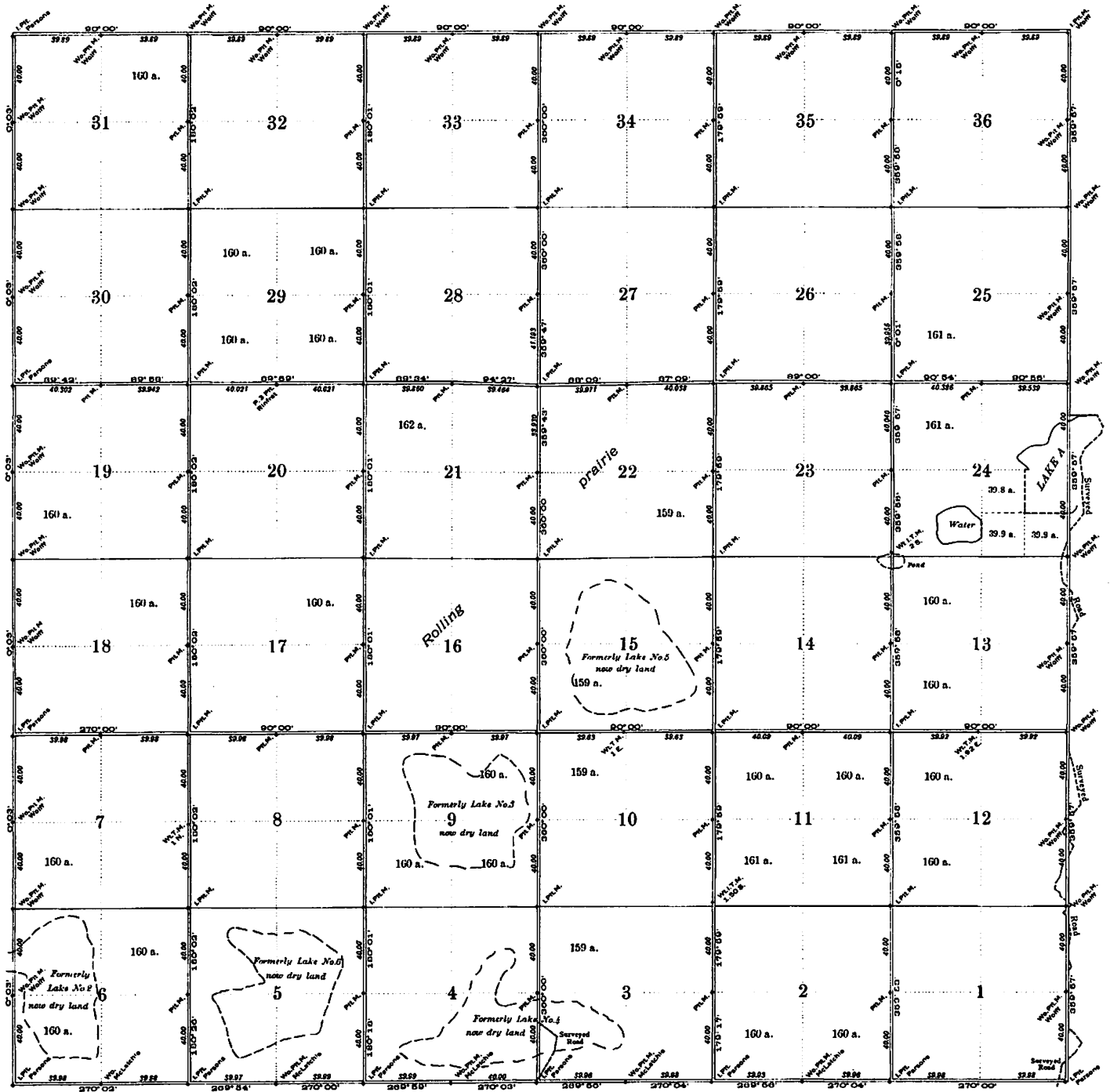
- a) What was the cause for this court case, and what was the evidence given?
- b) What was the decision and what was the decision based on?
- c) Describe how this case affects your assessment of a natural boundary.

SASKATCHEWAN

Plan of Township 5, Range 18, West of the Second Meridian.

THIRD EDITION

SCALE 40 CHAINS TO AN INCH



PHOTOZINCORRANGED AT THE SURVEYOR GENERAL'S OFFICE, OTTAWA, CANADA

Compiled from official surveys by

J. McLatchie	D.L.S.	15th September	1881
C. E. Wolff	D.L.S.	13th October	1881
F. Fafard	D.L.S.	20th August	1882
J. L. R. Parsons	D.L.S.	24th August	1905
A. G. Stuart	D.L.S.	4th July	1914
C. Rinfret	D.L.S.	7th October	1920

NOTE: The subdivisions of quarter-sections shown upon this plan are legal subdivisions. Distances are in chains. Bearings are reckoned from the astronomical meridian through the centre of the township. Areas in acres are marked on all lands surveyed, except lands that have been patented. The name at a monument is that of the surveyor who erected or restored the monument. All monuments not so designated were erected by F. Fafard.

P. stands for standard post; I. for old pattern iron post; Wo. for wooden post; Pts. for four pits; M. for mound; Wk. for witness; T. for trench.

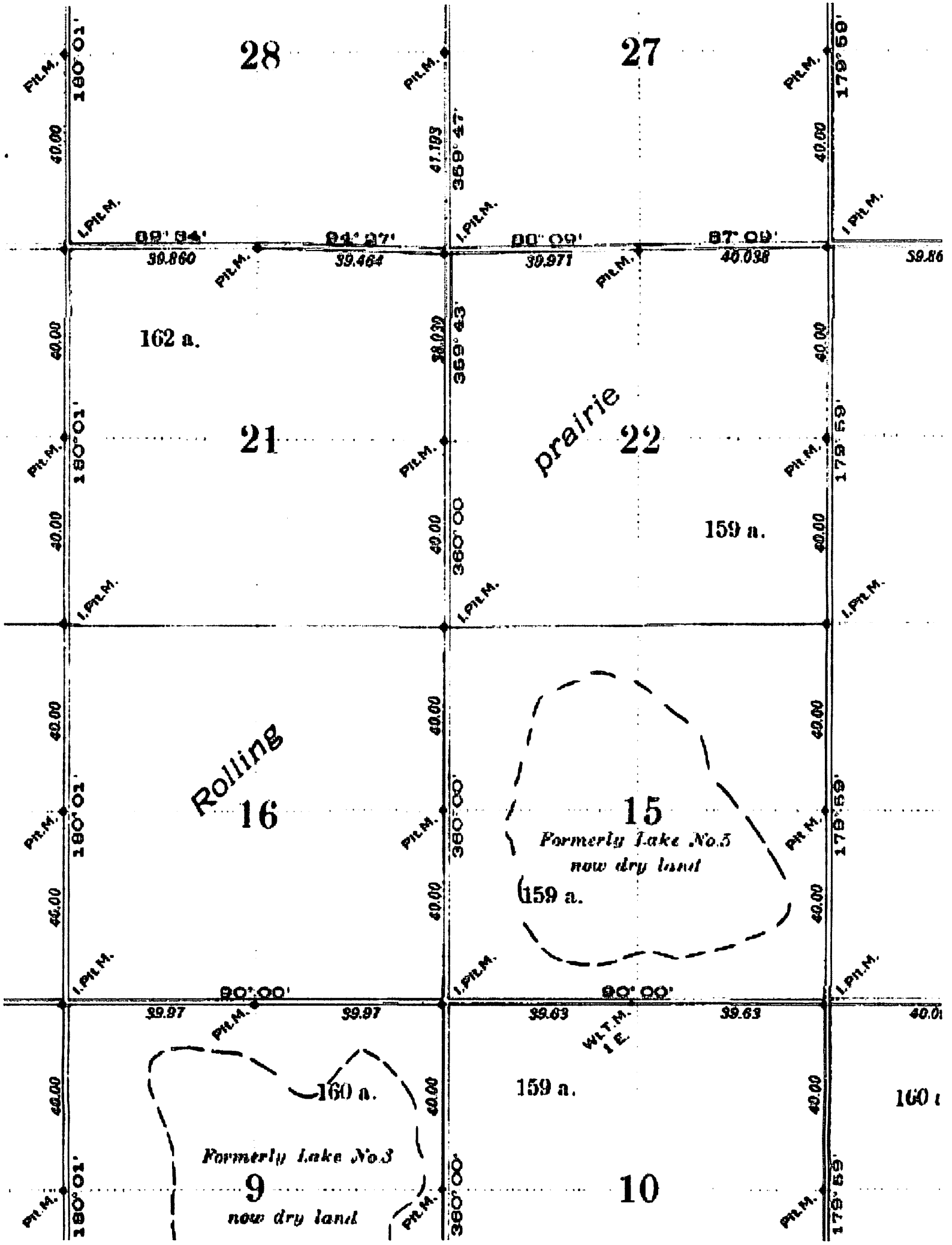
Department of the Interior, Ottawa, 21st July, 1922

Approved and Confirmed

J. Shanko
For the Surveyor General

13	14	15	16
12	11	10	9
5	6	7	8
4	3	2	1

Legal Subdivisions
in a Section



28

27

162 a.

21

prairie 22

159 a.

Rolling 16

15
Formerly Lake No. 5
now dry land
159 a.

160 a.
Formerly Lake No. 3
9
now dry land

159 a.

10

160 a.

PL.M. 180° 01' 40.00
L.P.L.M.
89° 34' 39.860
P.L.M.
84° 27' 39.464
P.L.M.
80° 09' 39.971
P.L.M.
87° 09' 40.038
S9.86
40.00
P.L.M.
180° 01' 40.00
L.P.L.M.
360° 00' 40.00
P.L.M.
369° 43' 38.032
L.P.L.M.
179° 59' 40.00
S9.86
P.L.M.
180° 01' 40.00
L.P.L.M.
360° 00' 40.00
P.L.M.
360° 00' 40.00
L.P.L.M.
179° 59' 40.00
S9.86
P.L.M.
180° 01' 40.00
L.P.L.M.
90° 00' 39.97
P.L.M.
90° 00' 39.97
P.L.M.
90° 00' 39.63
W.L.T.M. 1 E.
90° 00' 39.63
40.01
40.00
P.L.M.
180° 01' 40.00
L.P.L.M.
360° 00' 40.00
P.L.M.
179° 59' 40.00
S9.86

SASKATCHEWAN

Plan of Township 53, Range 20, West of the Third Meridian

SECOND EDITION, CORRECTED

SCALE 40 CHAINS TO AN INCH

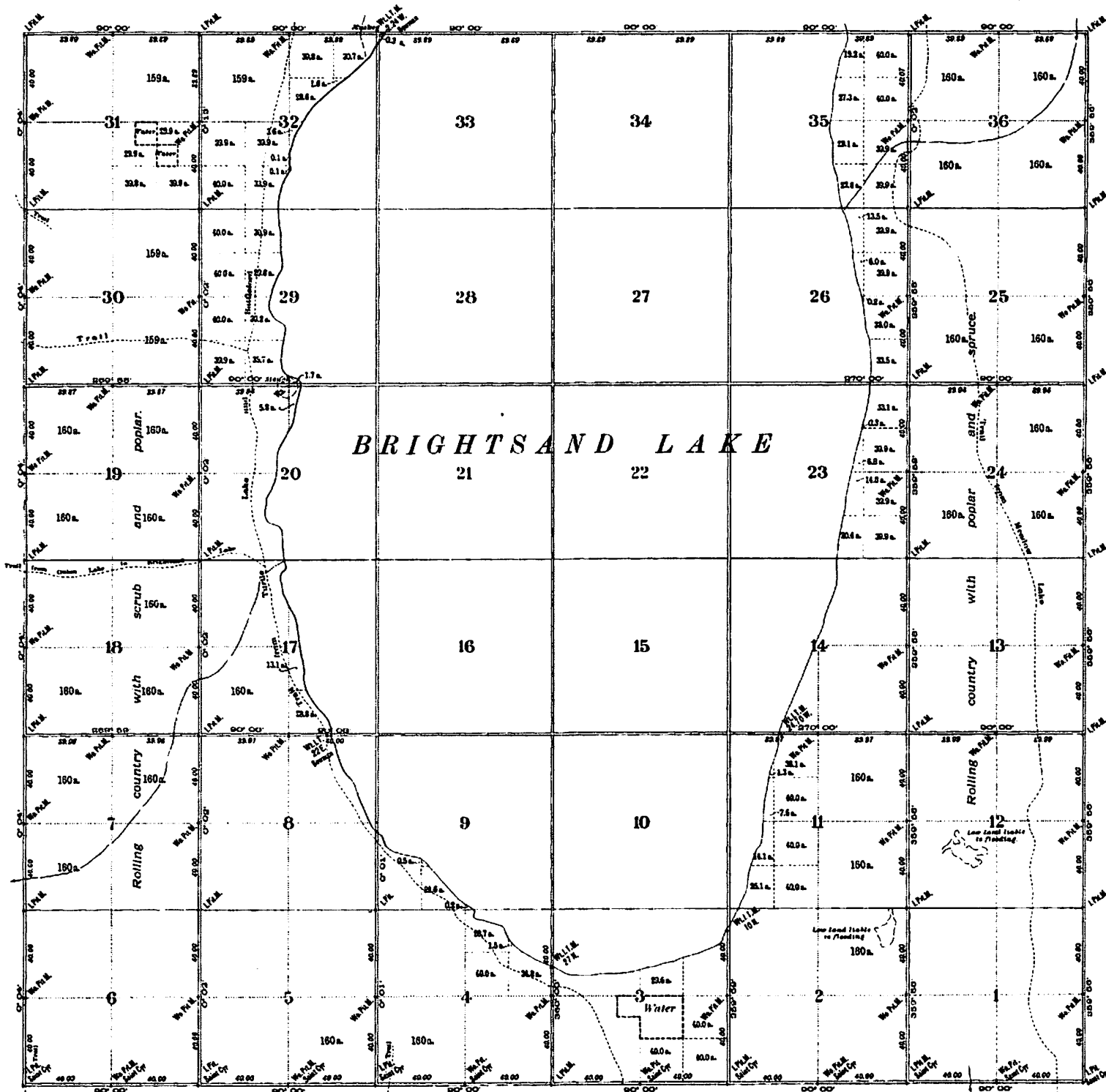


PHOTO-ENGRAVED AT THE SURVEYOR GENERAL'S OFFICE, OTTAWA, CANADA

Compiled from official surveys by

A. Saint Cyr, D.L.S., 30th May, 1903
 T. S. Gore, D.L.S., 14th September, 1904
 E. P. Bowman, D.L.S., 11th October, 1915

Department of the Interior, Ottawa, 8th August, 1916.

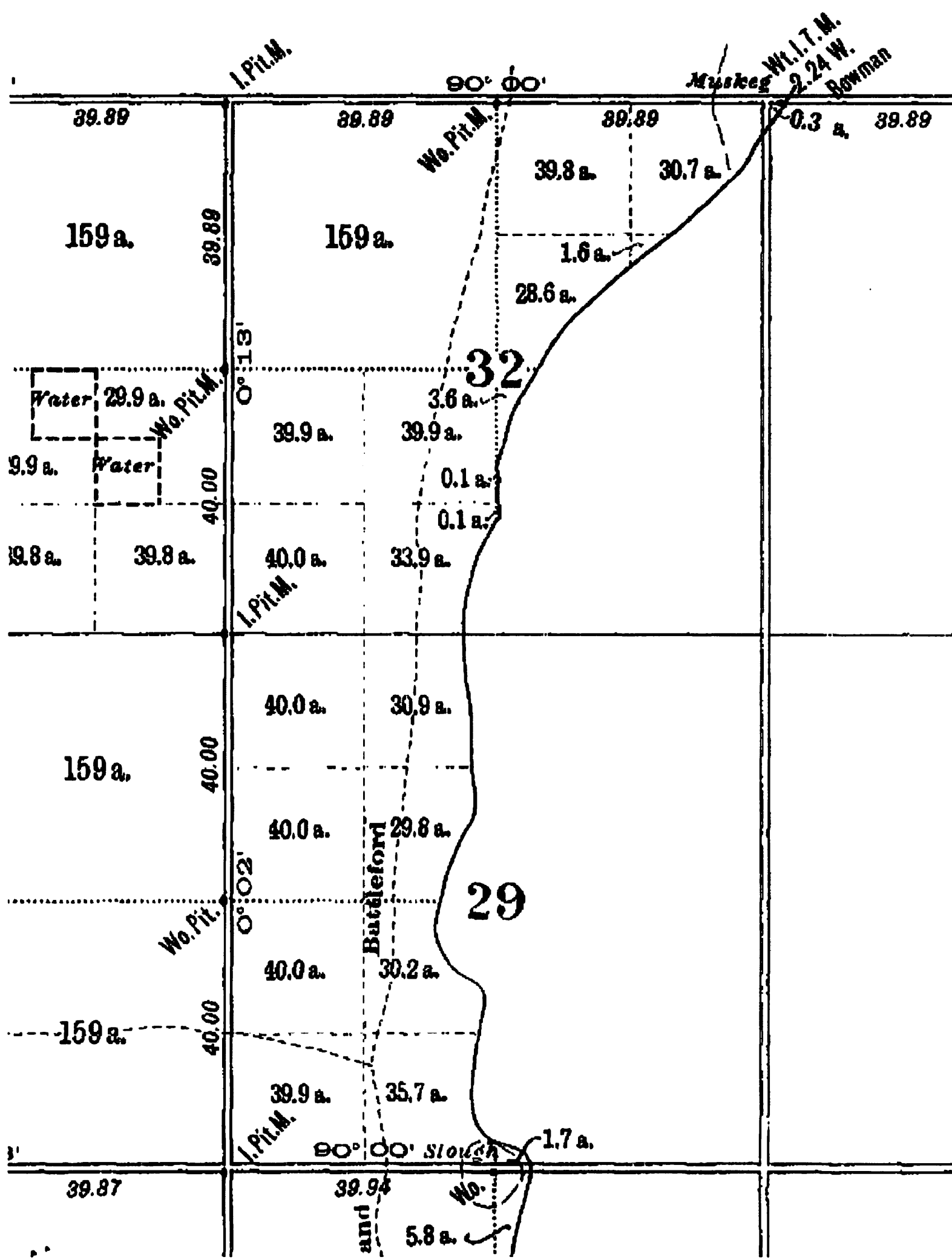
Approved and Confirmed.

E. Deville
 Surveyor General.

NOTE: The subdivisions of quarter sections shown upon this plan are legal subdivisions and quarters of legal subdivisions. Distances are in chains. Bearings are reckoned from the astronomical meridian through the centre of the township. Areas in acres are marked on all lands surveyed except lands that have been patented and lands of which more than one-half is reported to be permanently under water. The name at a monument is that of the surveyor who erected or restored the monument. All monuments not so designated were erected by T. S. Gore, D.L.S.

13	14	10	16
12	11	10	9
8	6	7	8
4	3	2	1

Legal Subdivisions
 in a Section.



I. Pit.M.

90° 00'

Muskogee
 No. Pit.M.
 2.24 W.
 Bowman

39.89

39.89

39.89

0.3 a. 39.89

159 a.

159 a.

39.8 a.

30.7 a.

39.89

1.6 a.

28.6 a.

32

Water 29.9 a.

3.6 a.

9.9 a.

Water

39.9 a.

39.9 a.

0° 13'

No. Pit.M.

0.1 a.

19.8 a.

39.8 a.

40.0 a.

33.9 a.

40.00

I. Pit.M.

159 a.

40.0 a.

30.9 a.

40.00

40.0 a.

29.8 a.

29

Buttleford

No. Pit.M.

0° 02'

40.0 a.

30.2 a.

159 a.

40.00

39.9 a.

35.7 a.

I. Pit.M.

1.7 a.

stouch

39.87

39.94

No.

and

5.8 a. ✓