

**SASKATCHEWAN LAND SURVEYORS ASSOCIATION
SASKATCHEWAN LAND SURVEYOR'S EXAMINATION**

PROVINCIAL STATUTES – PAPER I

March, 2019

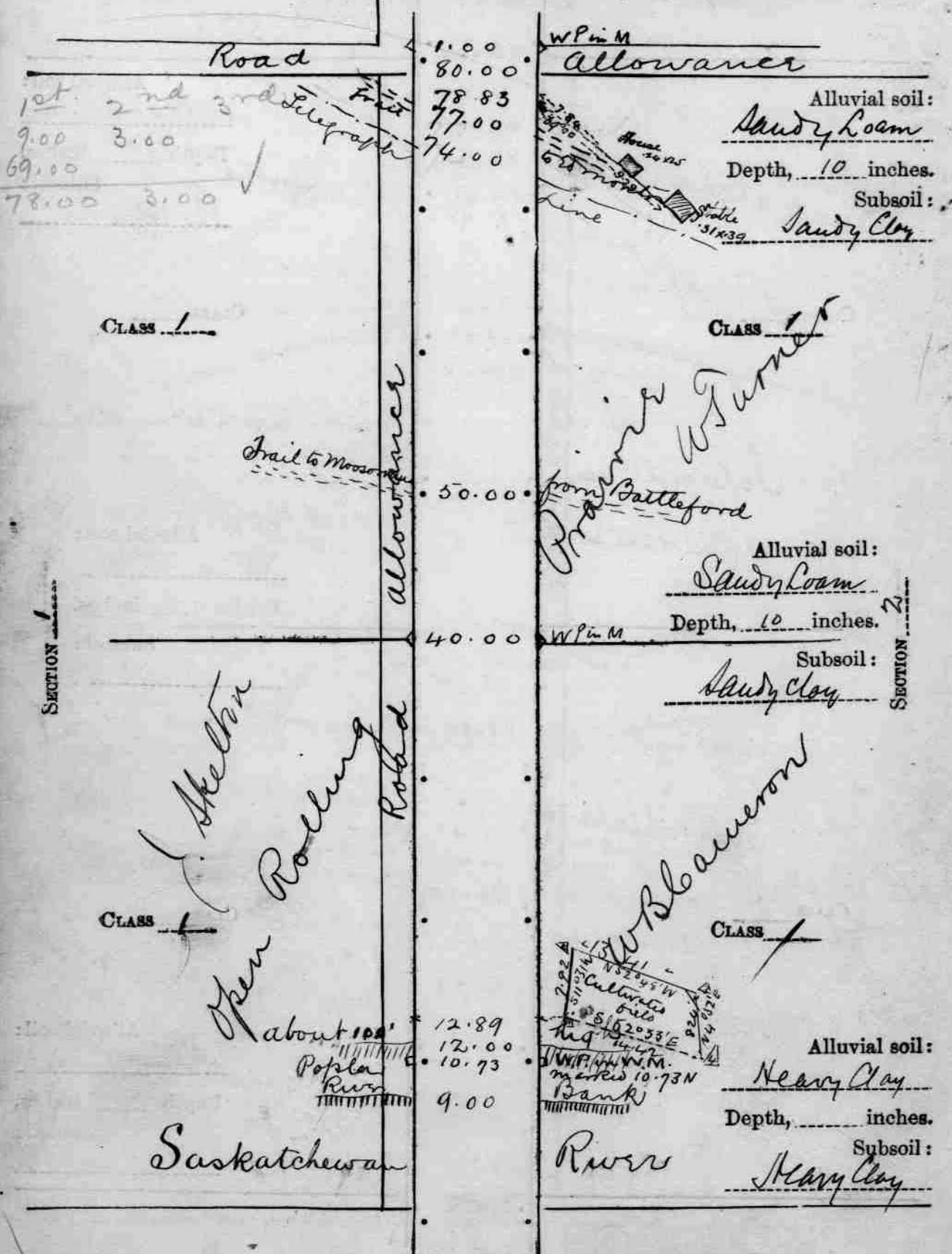
MARKS

TIME: 3 hours

- 10** **1.** The Land Surveys Act, 2000. Define the following:
- a)** Descriptive Plan
 - b)** Parcel
 - c)** Monument
 - d)** Land
 - e)** Primary Survey
- 4** **2.** What natural monuments can be used in conducting a survey?
- 4** **3.** The City of Saskatoon intends on replacing the concrete sidewalks around eight blocks in the downtown area. With respect to the protection of existing monumentation, what are their responsibilities?
- 4** **4.** What does the Controller do immediately following the approval of your plan?
- 4** **5.** What are the categories of descriptive plans and their characteristics?
- 4** **6.** List the four things that the Controller of Surveys is prohibited from doing.
- 4** **7.** List the Accuracy Factors; how they are defined; and how they are used.
- 4** **8.** SaskEnergy is installing a transmission line in a Rural Municipality. Is a Plan of Survey required to be submitted to the Controller of Surveys for approval?
- 6** **9.** Define “reduced data”; “corrected data”; and “raw data”.
- 7** **10.** When you submit a plan to the Controller for approval, what powers can the Controller exercise to ensure the plan is suitable for approval.
- 7** **11.** List the means of determining the boundaries of unmonumented railway lines as stated in Section 105 of the Land Surveys Regulations.

- 5 **12.** In the course of your duties as a Saskatchewan Land Surveyor, you and your crew are hindered in completing your work by an angry and aggressive landowner. What are your options enabling you to complete your work and what penalties could the landowner face?
- 4 **13.** What are the objects of our Association?
- 3 **14.** How many licensed members, who reside outside Saskatchewan, are eligible to be elected as a member of council?
- 3 **15.** Who appoints our Public Member?
- 3 **16.** What Minister is responsible for the administration of our Act?
- 3 **17.** Which committee must our Public Member sit on?
- 3 **18.** At a Special Meeting, how many licensed members are needed to approve a new regulatory bylaw?
- 7 **19.** With respect to the General Instructions for Surveys and Plans Outside the Provincial Survey System:
- a) What is the primary principal behind requiring connections?
- b) If you find that the above Instructions do not adequately define the procedure required to perform your survey, who do you contact and what information do you provide to the contact?
- 4 **20.** According to the Ninth Edition of The Manual of Survey of Dominion Lands, what is the method prescribed to establish a witnessed section corner from a witness monument?
- 7 **21.** What information do you ascertain from looking at the attached township field notes?

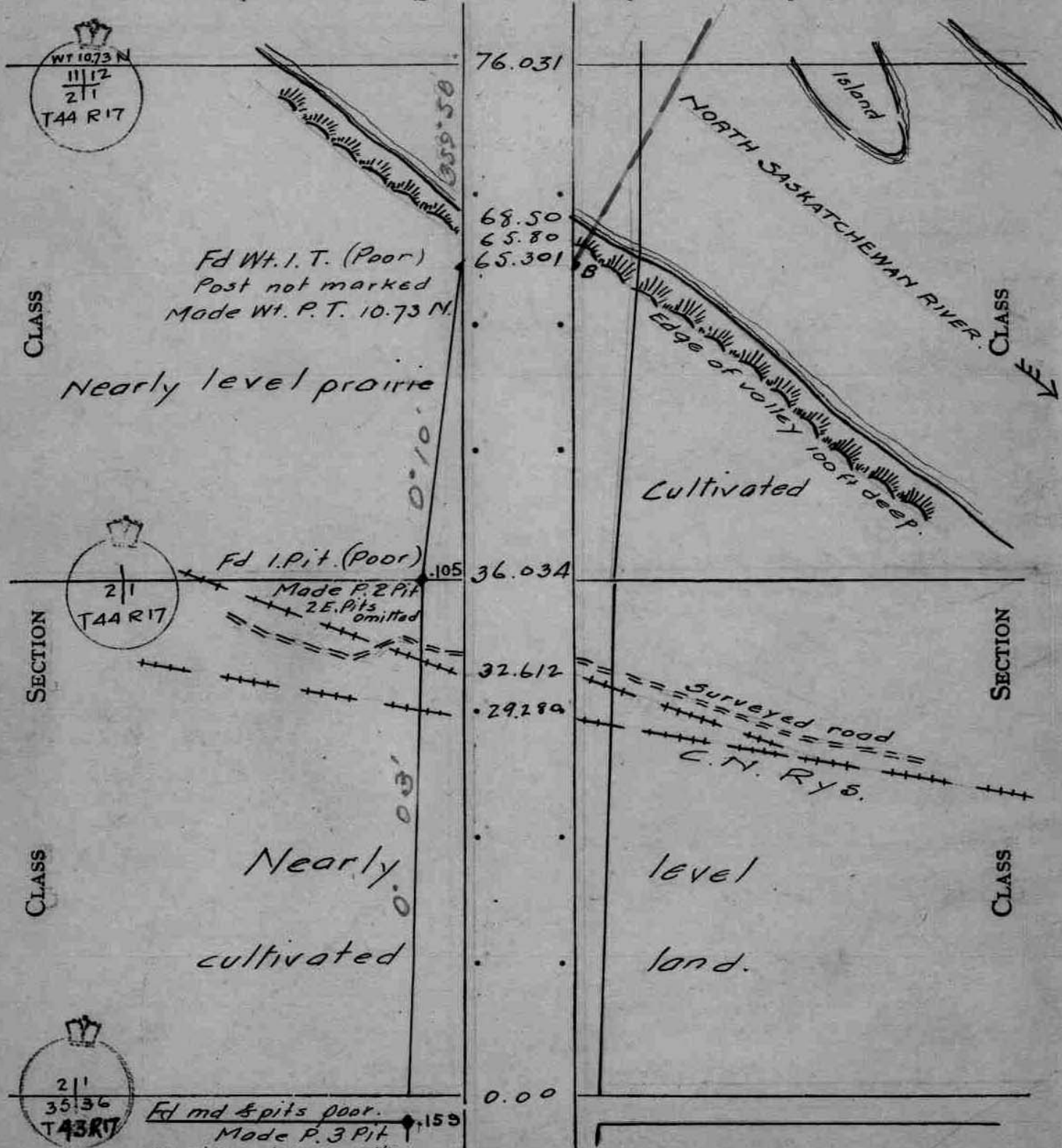
Township 44, Range 17 West of 3rd J. Meridian.
East Boundary of Section 2 Course: South



The above line was run on the 18th day of February 1884

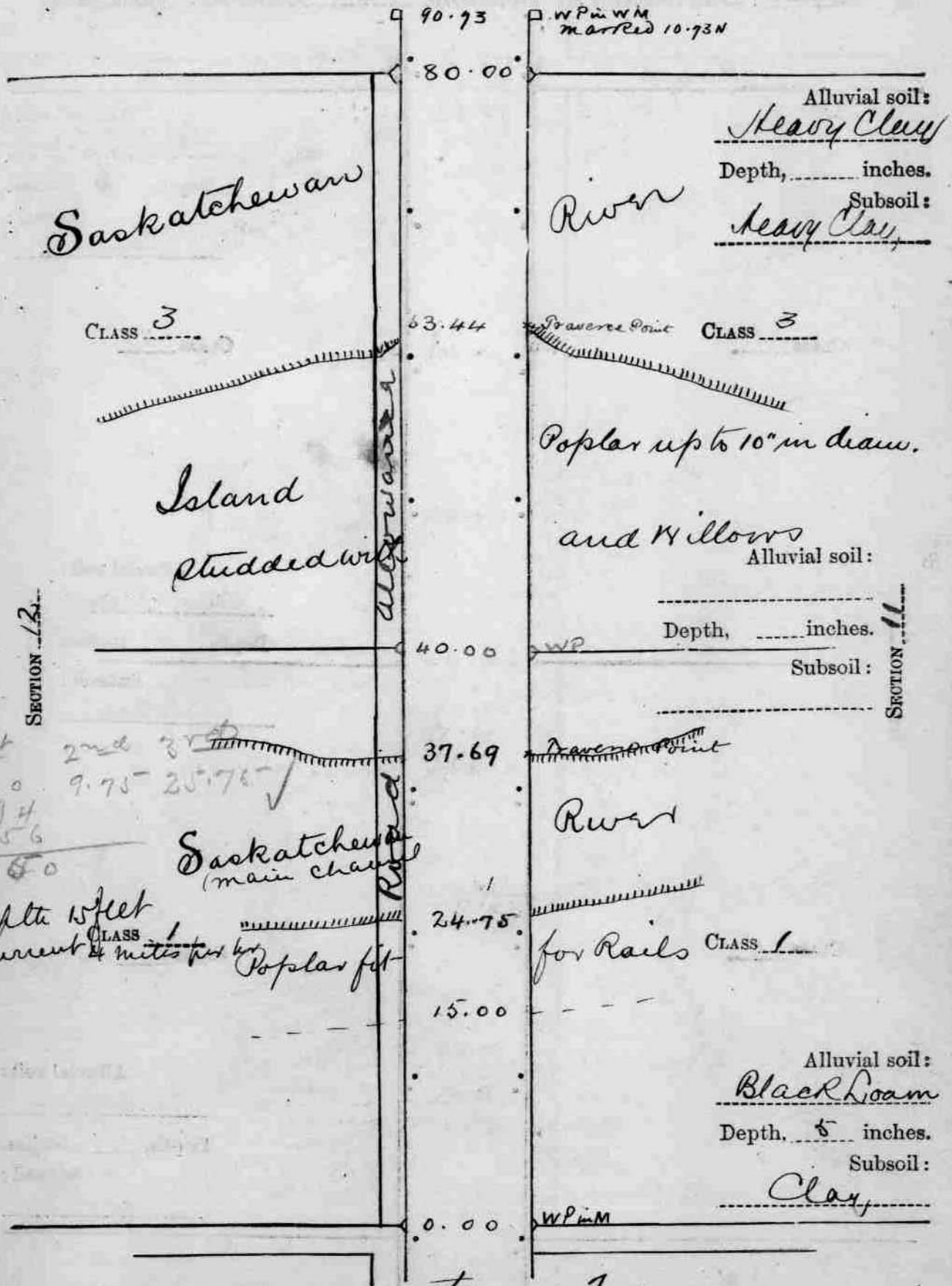
Tp. 44 R. 17 W. 3 Mer. E By. of Sec. 2 Course 359 58

Produced from bearing 359 58 of E By. of Sec. 11



The above line was run on the 2 day of Aug. 1928.

Township 44, Range 17 West of 3rd J. Meridian.
East Boundary of Section 11 Course: South



1st 15.00
 2nd 9.75
 3rd 25.75 ✓
 12.94
 16.56
 44.50

Depth 15 feet
 Current 4 miles per hour
 CLASS 1

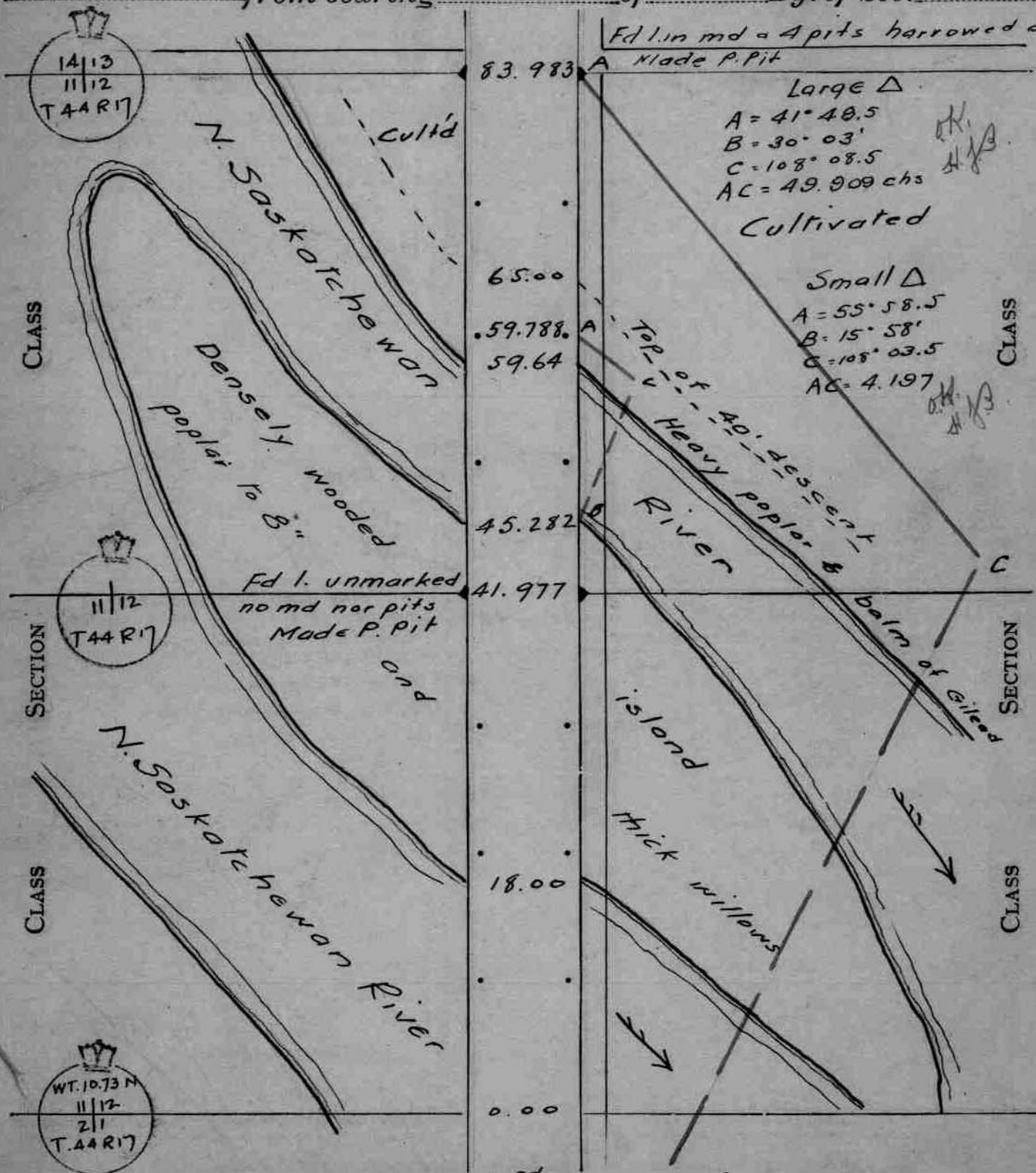
Poplar fit

The above line was run on the 18th day of February 1884

Note: This line was triangulated from Wt. 10.73 N. to N.E. cor sec. 11. and chained south from there. 11

Tp. 44 R. 17 W. 3 Mer. E By. of Sec. 11 Course 359° 58'

Derived from bearing 359° 58' of E By. of Sec. 11 Tp. Plan



Fd 1. in md = 4 pits harrowed over
A Made P. Pit

Large Δ
A = 41° 40.5'
B = 30° 03'
C = 108° 08.5'
AC = 49.909 chs
Cultivated

Small Δ
A = 55° 58.5'
B = 15° 58'
C = 108° 03.5'
AC = 4.197

83.983

65.00

59.788

59.64

45.282

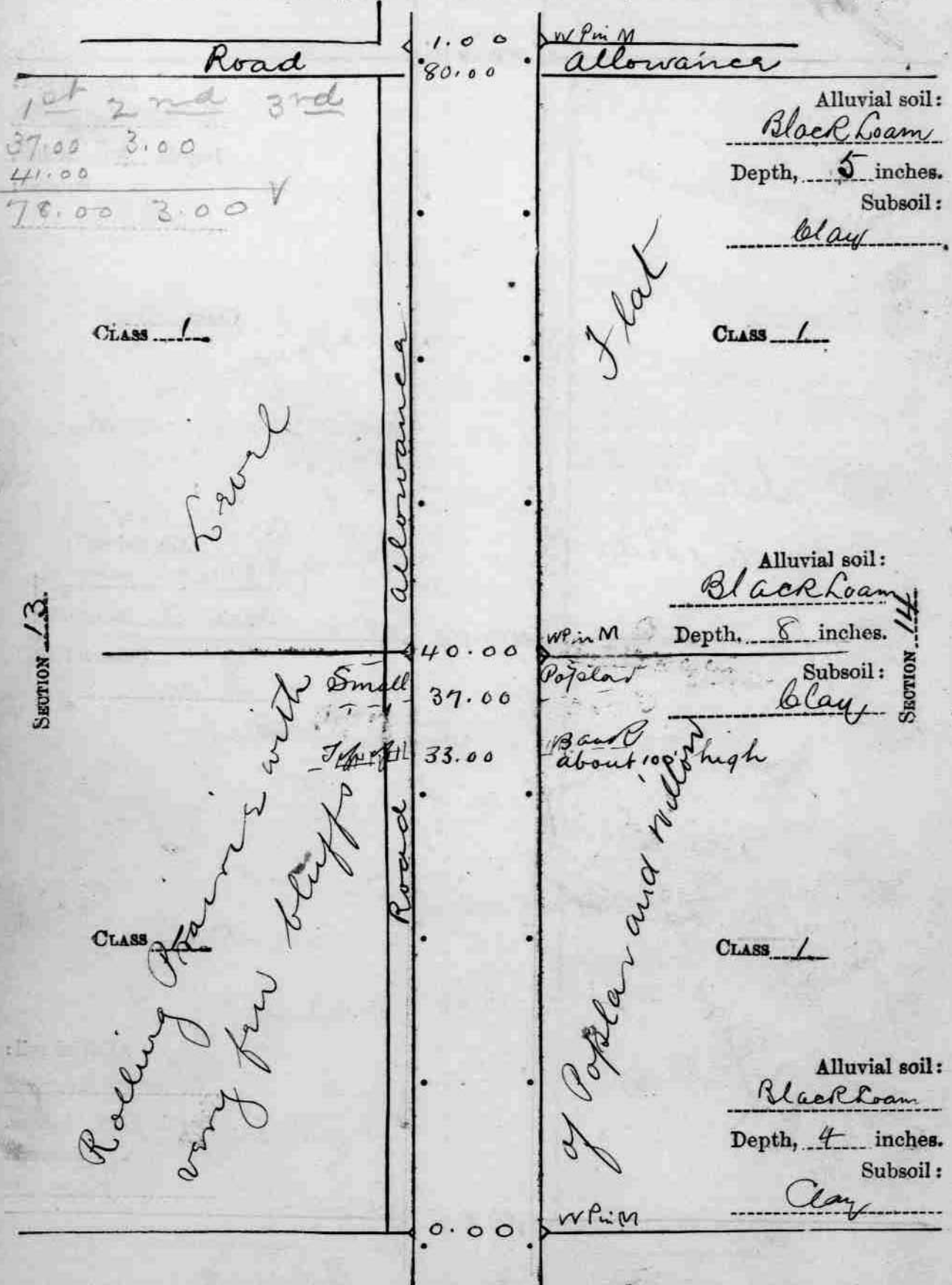
41.977

18.00

0.00

The above line was run on the 3rd day of Aug. 19.28.

Township 44, Range 17 West of 3rd J. Meridian.
East Boundary of Section 14 Course: South.



The above line was run on the 16th day of February 1884